

DSG-SoLID R&D Meeting Minutes

Date: December 2, 2022

Time: 11:00 – 12:00

Attendee: Mary Ann Antonioli, Peter Bonneau, Aaron Brown, Pablo Campero, Mindy Leffel, and Tyler Lemon

1. Electrical drawings

Mary Ann Antonioli and Pablo Campero

1. Modified drawings to show wiring changes made to the 24 VDC supply to the quench detector unit
 - Posted drawing A00000-16-03-0252
 - Changed label on drawing A00000-16-03-0350; needs to be reposted

2. Power Supply monitoring

Pablo Campero and Mindy Leffel

1. Completed cable to monitor analog output signals from power supply; tested and connected to instrumentation rack
2. Reads out four signals from the power supply
 - Calibrated ADC PLC module
 - Modified PLC code to assign channels used to read signals
3. Modified and tested *Solenoid PSU* HMI screen
4. Monitored power supply current output on HMI screen and compared monitored values with output current values shown in power supply local display; values nearly equal

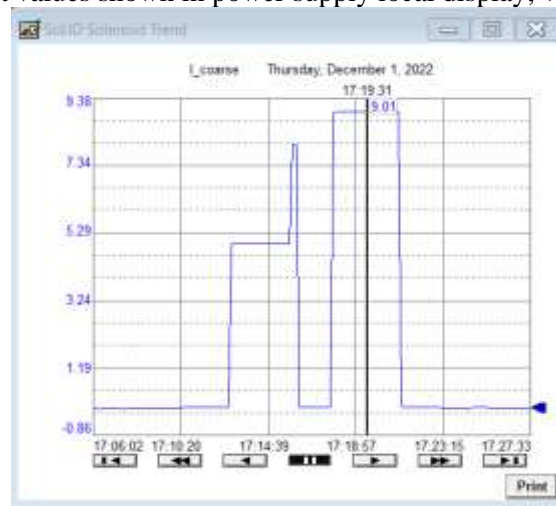


Fig.1. Power supply output current monitored during test

2. PLC and EPICS data transfer

Pablo Campero

1. In August, 2018, the KEPSEVER Enterprise ESD software was suggested and sold to Jefferson Lab as an option to transfer PLC tags to EPICS and vice-versa, but based on the Rockwell articles/notes and experience the software to make this possible should be KepServerEX
 - Sent email to inquire status of software exchange

2. Created OPC server in KEPSERVEREX demo version, which needs to be restarted every two hours
 - Adding PLC tags that will transfer to EPICS
 - Ran OPC Client to monitor tags
3. Installed softIOC Shell software on PHYCAD 58
 - Developing database

3. Cable from voltage tap to resistor box

Pablo Campero, Brian Eng, and Mindy Leffel

1. Discussed details of cable fabrication
2. Cable in progress

4. Repairs on current lead voltage taps

Mindy Leffel

1. Voltage tap wire loosened during turret installation; soldered to reconnect

5. Phoebus screens

Mary Ann Antonioli and Pablo Campero

1. Modifying *Solenoid Axial & Radial Support Expert* screen
2. *Solenoid CCS Board Control* screen in progress